



Form

Finishers

Models:

Suzie II

Mr. Cissell

Ms. Cissell

Sensi-Form

CISSELL MANUFACTURING COMPANY

HEADQUARTERS

831 SOUTH FIRST ST.

P.O. BOX 32270

LOUISVILLE, KY 40232-2270

PHONE: (502) 587-1292

SALES FAX: (502) 585-3625

SERVICE/PARTS FAX: (502) 681-1275

THIS MANUAL MUST BE GIVEN TO THE EQUIPMENT OWNER.

MANCONS

8/00 IH

Part No. D0099

WARRANTY

The Cissell Manufacturing Company (Cissell) warrants all new equipment (and the original parts thereof) to be free from defects in material or workmanship for a period of one (1) year from the date of sale thereof to an original purchaser for use, except as hereinafter provided. With respect to non-durable parts normally requiring replacement in less than one (1) year due to normal wear and tear, including, but not limited to, cloth goods, valve discs, hoses, and iron cords, and with respect to all new repair or replacement parts for Cissell equipment for which the one (1) year warranty period has expired, or for all new repair or replacement parts for equipment other than Cissell equipment, the warranty period is limited to ninety (90) days from date of sale. The warranty period on each new replacement part furnished by Cissell in fulfillment of the warranty on new equipment or parts shall be for the unexpired portion of the original warranty period on the part replaced.

With respect to electric motors, coin meters and other accessories furnished with the new equipment, but not manufactured by Cissell, the warranty is limited to that provided by the respective manufacturer.

Cissell's total liability arising out of the manufacture and sale of new equipment and parts, whether under the warranty or caused by Cissell's negligence or otherwise, shall be limited to Cissell repairing or replacing, at its option, any defective equipment or part returned f.o.b. Cissell's factory, transportation prepaid, within the applicable warranty period and found by Cissell to have been defective, and in no event shall Cissell be liable for damages of any kind, whether for any injury to persons or property or for any special or consequential damages. The liability of Cissell does not include furnishing (or paying for) any labor such as that required to service, remove or install; to diagnose troubles; to adjust, remove or replace defective equipment or a part; nor does it include any responsibility for transportation expense which is involved therein.

The warranty of Cissell is contingent upon installation and use of its equipment under normal operating conditions. The warranty is void on equipment or parts; that have been subjected to misuse, accident, or negligent damage; operated under loads, pressures, speeds, electrical connections, plumbing, or conditions other than those specified by Cissell; operated or repaired with other than genuine Cissell replacement parts; damaged by fire, flood, vandalism, or such other causes beyond the control of Cissell; altered or repaired in any way that effects the reliability or detracts from its performance, or; which have had the identification plate, or serial number, altered, defaced, or removed.

No defective equipment or part may be returned to Cissell for repair or replacement without prior written authorization from Cissell. Charges for unauthorized repairs will not be accepted or paid by Cissell.

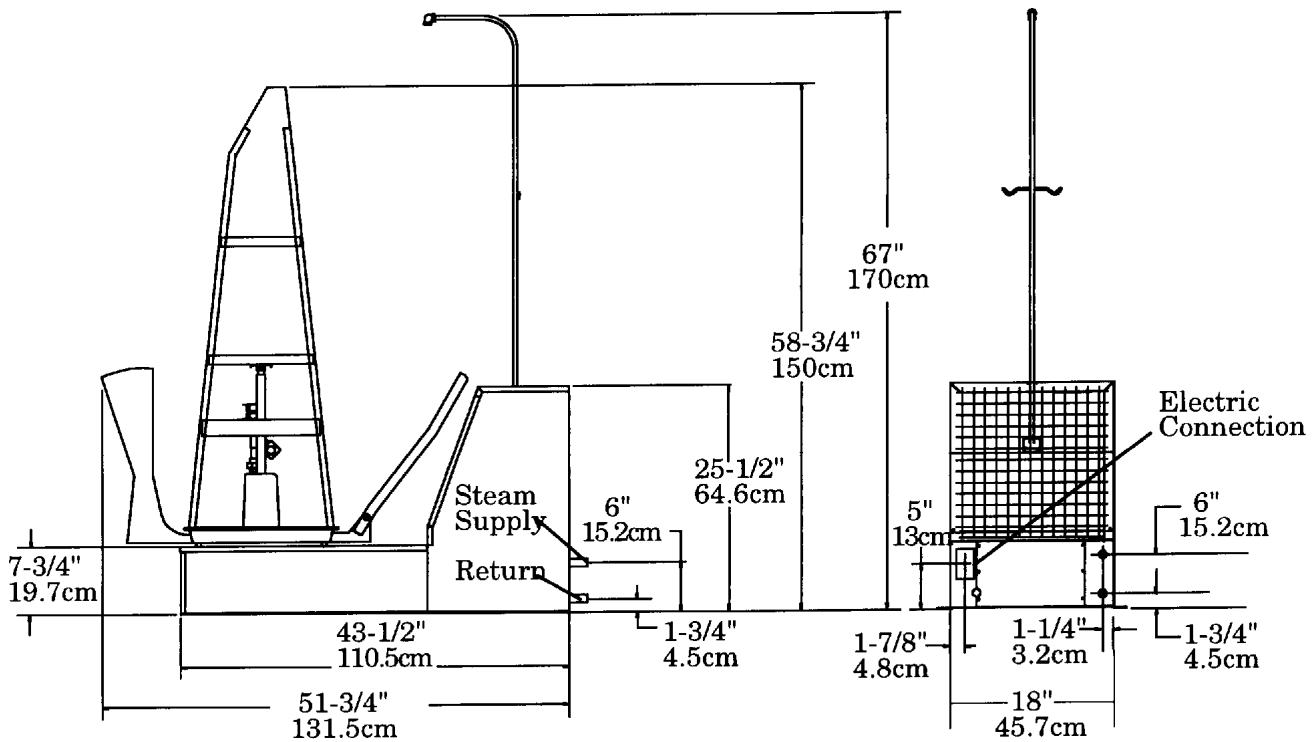
CISSELL MAKES NO OTHER EXPRESS OR IMPLIED WARRANTY, STATUTORY OR OTHERWISE, CONCERNING THE EQUIPMENT OR PARTS INCLUDING, WITHOUT LIMITATION, A WARRANTY OF FITNESS FOR A PARTICULAR PURPOSE, OR A WARRANTY OF MERCHANTABILITY. THE WARRANTIES GIVEN ABOVE ARE EXPRESSLY IN LIEU OF ALL OTHER WARRANTIES, EXPRESS OR IMPLIED. CISSELL NEITHER ASSUMES, NOR AUTHORIZES ANY PERSON TO ASSUME FOR IT, ANY OTHER WARRANTY OR LIABILITY IN CONNECTION WITH THE MANUFACTURE, USE OR SALE OF ITS EQUIPMENT OR PARTS.

For warranty service, contact the Distributor from whom the Cissell equipment or part was purchased. If the Distributor cannot be reached, contact Cissell.

TABLE OF CONTENTS

Cissell Equipment Warranty	1
Specifications and Dimensions	3
Installation Instructions.....	4
Operation and Safety Precautions	5
Operation-Controls.....	6
Service Chart and Maintenance	7-8
Revolving Form Adjustment.....	8
Instructions for Removing and Replacing Bag.....	9
Instructions for Tying Lower Tie String	10
Replacement Form Bags	11
Instructions for Adjusting Height of Revolving Form.....	12
Mr. Cissell Form Assembly Parts	13-14
Waist, Hip, and Lower Control Parts	15
Base and Blower Parts	16
Ms. Cissell and Sensi Form Parts	17-18
Suzie II Parts.....	19
Front and Rear Paddle Assembly.....	20
Steam Column and Piping Parts	21
Condenser and Spray Gun Parts	22-23
Damper Assembly Parts.....	24
Control Panel and Electrical Parts.....	25
Wiring Diagrams	26-28

OVERALL DIMENSIONS



NOTE:

Shown with Mr. Cissell Form. To figure the height from floor, add 7-3/4" (19.7cm) to the form heights listed below.

Mr. Cissell - 51" (130cm)

Ms. Cissell - 58-7/8" (150cm)

Sensi-Form - 58-7/8" (150cm)

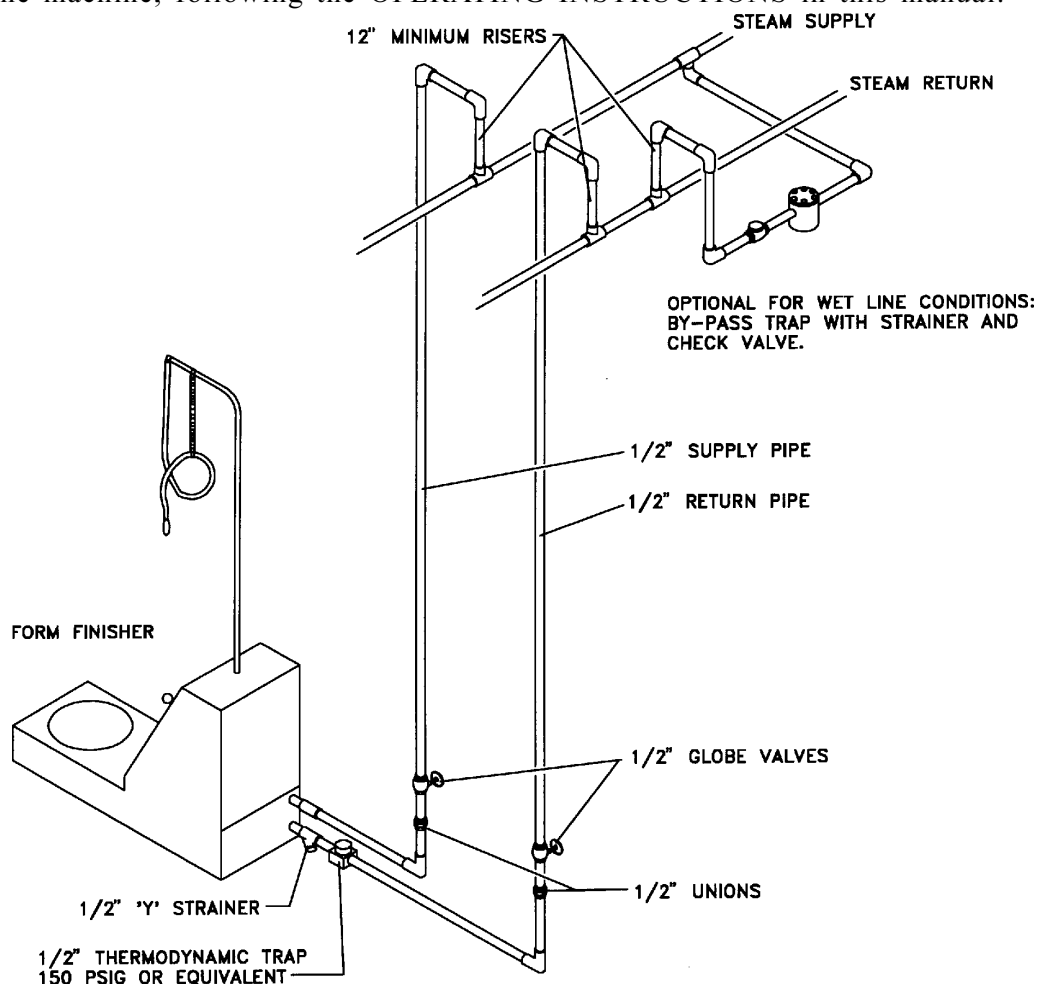
Suzie II - 59-1/4" (150.49 cm)

SPECIFICATIONS	MS. CISELL, SENSI-FORM CF600	MR. CISELL CF100	SUZIE II
Electrical	1 H.P. Motor 115V, 50/60 Hz., 1 Ph, 12 Amps 230V, 50/60 Hz., 1 Ph, 6 Amps	1 H.P. Motor 115V, 60 Hz., 1 Ph, 6 Amps 230V, 60 Hz., 1 Ph, 3 Amps 230V, 50 Hz., 1 Ph, 3 Amps	1 H.P. Motor 115V, 60 Hz., 1 Ph, 6 Amps 230V, 60 Hz., 1 Ph, 3 Amps 115V, 50 Hz., 1 Ph, 3 Amps
Maximum Operating Pressure	100 P.S.I. (6.9 Bars)	100 P.S.I. (6.9 Bars)	100 P.S.I. (6.9 Bars)
Boiler Horsepower Required	2.5 H.P. (1.9 kw)	2 H.P. (1.5 kw)	2 H.P. (1.5 kw)
Steam Supply & Return Lines	1/2" (1.27 cm)	1/2" (1.27 cm)	1/2" (1.27 cm)
Net Weight	220 lbs. (100 kg)	220 lbs. (100 kg)	220 lbs. (100 kg)
Shipping Weight	250 lbs. (113 kg)	250 lbs. (113 kg)	250 lbs. (113 kg)
Export Shipping Dimensions	61" x 25" x 69" (155 cm x 64 cm x 175 cm)	61" x 25" x 69" (155 cm x 64 cm x 175 cm)	61" x 25" x 69" (155 cm x 64 cm x 175 cm)
Export Crate Volume	61 Cubic Feet (1.73 m ³)	61 Cubic Feet (1.73 m ³)	61 Cubic Feet (1.73 m ³)

INSTALLATION INSTRUCTIONS

NOTE: *This machine should be installed by qualified service personnel only.*

1. Uncrate the machine. Check the nameplate voltage and current; match it with the power being connected.
2. Set the machine in position and bolt to floor.
3. Connect Water Spray Gun to machine. Remove the Lint Screen to access the connection. Open the valve on the Condenser and replace the Lint Screen.
4. Connect steam supply line as shown in illustration.
5. Connect steam return line as shown. **NOTE:** Before final return line connection is made, open the steam supply valve and blow all foreign matter out of the steam lines. Failure to do so will cause trap to leak.
6. Make electrical connections in junction box on rear of machine, following applicable electric codes. Include a fused disconnect switch or circuit breaker with "slow-blow" characteristics and be capable of carrying 15 amps, 115 volts or 8 amps, 230 volts.
7. Install the revolving form on the machine.
8. Turn on the electric power to machine. Remove the plastic cover from the bag. Open the steam lines.
9. Test the machine, following the OPERATING INSTRUCTIONS in this manual.



SAFETY PRECAUTIONS

Please read these warnings before operating or servicing machine.

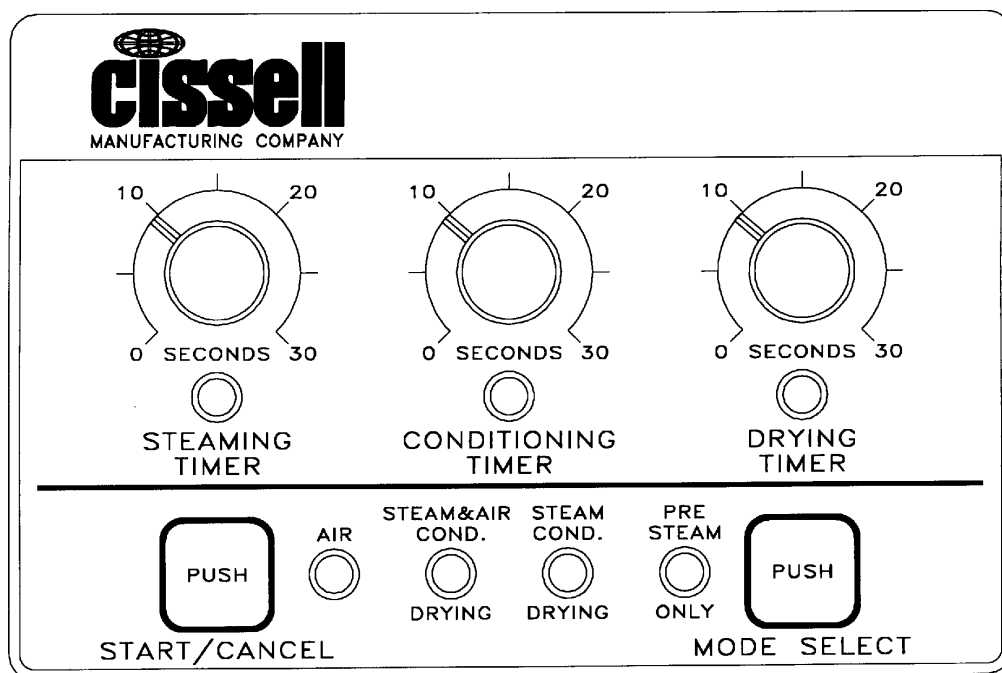
CAUTION: This machine emits hot steam. To prevent burns, avoid contact with hot steam. Before service machine, close steam supply valve and purge lines.

CAUTION: Shut off electrical supply before servicing to avoid electrical shock.

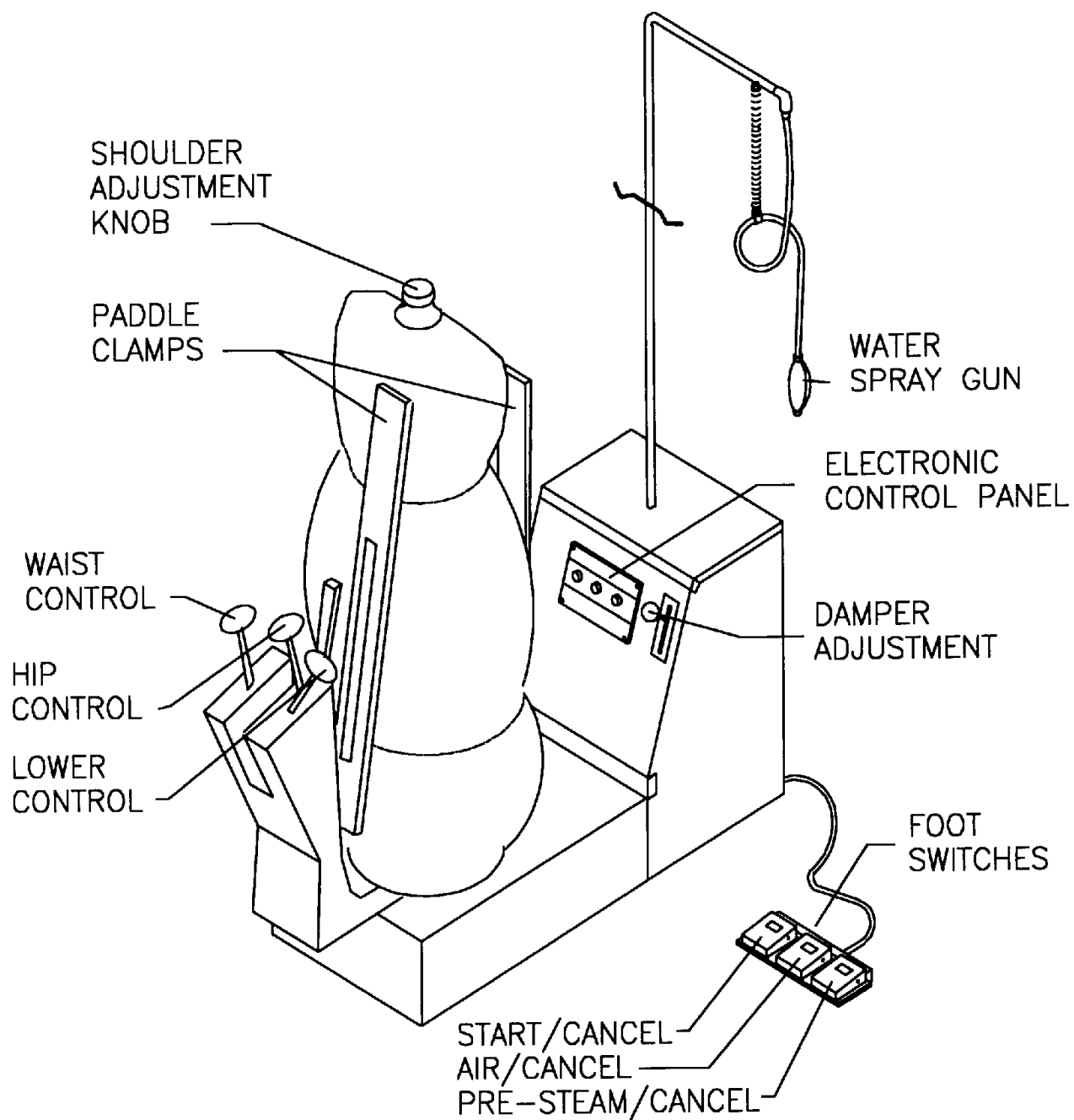
OPERATING INSTRUCTIONS

1. Machine can be operated from any side. Position foot switches at convenient location.
2. Place garment on form. Adjust shoulder form width by turning knob in either direction. The Mr. Cissell form requires adjustment of the Waist, Hip and Lower control knobs. After adjusting lock the controls by twisting the knobs clockwise.
3. Press the AIR foot switch to operate the blower for sizing the form bag. Size the bag by adjusting the DAMPER CONTROL. Using the Control Panel, press the MODE SELECT until the AIR light glows and press START/CANCEL to operate the blower, then proceed with sizing the bag.
4. Set the three control timers to the recommended settings:
Steaming: 6-9 seconds
Conditioning: 4-9 seconds
Drying: 12-16 seconds
These settings should be fine-tuned to the particular garment, steam pressure and ambient conditions. The recommended cycle is the steam/air conditioning and the drying. The control will power up in this cycle.
5. This machine has the ability to pre-steam a garment prior to the automatic finishing cycle. To actuate this cycle, press the MODE SELECT pad until the PRE-STEAM LIGHT glows, then press START. Using the foot switch, press PRE-STEAM.
6. If a cycle is operating, it can be cancelled at any time by pressing any foot switch or control panel pads.

Control Panel



OPERATION - CONTROLS



NOTE: Mr. Cissell shown above. Features of other models may vary.

SERVICE CHART

CAUTION: BEFORE SERVICEING MACHINE, SHUT OFF ELECTRICAL POWER TO AVOID POSSIBLE ELECTRICAL SHOCK. SHUT OFF STEAM SUPPLY AND PURGE PRESSURE FROM STEAM LINES TO AVOID BURNS FROM HOT STEAM.

REFER TO PARTS SHEETS FOR CORRECT REPLACEMENT PARTS.

PROBLEM	CAUSE	REMEDY
(1) No Steam	A. Steam supply valve closed.	Open valve in steam supply line.
	B. Electric power off.	Check for blown fuse, tripped circuit breaker or loose wire connection. Tighten wire nuts and restore power.
	C. Bad solenoid valve coil.	Disconnect power and measure coil resistance. A good coil should be between 50-125 hms. Replace coil if not within these parameters.
	D. Steam timer may slip on shaft and be set on "0".	Loosen set screw and remove knob shaft. Turn shaft to maximum counter-clockwise position. Attach knob to shaft pointing to "0" and tighten set screw.
	See item 11.	
(2) No Air	A. Damper closed.	Open damper.
	B. Drying timer slipping.	See item 1D.
	C. Defective motor relay.	Disconnect and measure resistance of relay coil. A good coil should be between 240-360 ohms. Replace coil if not within these parameters.
	D. Blower wheel stuck.	Check wheel by moving by hand. If wheel rubs or is stuck, loosen the set screws and align the wheel on the shaft. Tighten set screws.
	E. Defective motor.	Measure the resistance of the black and white wires on the motor terminal board. They should be between 5-20 ohms. Replace motor if not within these parameters.
	F. Defective motor capacitor.	If relay, blower wheel, and motor are good, replace motor.
	See items 1B and 11.	
(3) Steam Valve Leaks	A. Defective steam valve.	Replace valve.
(4) Wet Steam	A. Trap not operating.	Check size and operation of trap. Refer to the Installation Instructions and make corrections in installation if needed. Replace trap if defective.
	B. Check valve problem.	Check for proper installation. Replace if bad.
	C. Strainer clogged.	Clean or replace as needed.
	D. Return line closed.	Open return line.
	E. Steam cycle set too long.	Reduce steam timer setting.
	F. Steam lines installed wrong.	Refer to steam line Installation Instructions.
	G. Heavy condensate in supply.	Install by-pass from supply header to return line.
	H. Units not trapped correctly.	Each machine needs separate trap.
	I. Back pressure in return line.	Check trap installation. Return lines must be gravity fed to condensate tank. Properly vent the condensate tank.

SERVICE CHART

PROBLEM	CAUSE	REMEDY
(5) Water in the base.	A. Wet steam.	See item 4.
	B. Steam leak in machine.	Inspect and repair or replace leaking part.
	See items 3, 4, and 8.	
(6) Noisy or vibration.	A. Foreign object in blower.	Remove foreign object.
	B. Wheel out of balance.	Inspect wheel for loose weights, out of round or damage. Repair or replace as needed.
	C. Wheel loose on shaft.	Tighten set screws on wheel hub.
	D. Motor mount bent.	Repair or replace as needed.
	E. Motor bearings bad.	Repair or replace as needed.
(7) Not enough steam.	See items 1A, 1D, or 11.	
(8) Too much steam.	Timer set too long.	Reset timer.
	See item 11.	
(9) Too much air.	Timer set too long.	Reset timer.
	See item 11.	
(10) Form will not inflate.	A. Damper is closed.	Open damper; check damper control linkage and repair or replace as needed.
	See items 2 and 11.	
(11) Timer control does not function.	A. No power on control.	Check fuse on back of control, replace if needed.
	B. Moisture accumulated.	Check for steam or water leaks. Dry out control.
	C. Timer control bad.	Replace timer control.

REVOLVING FORM ADJUSTMENT

If the Revolving Form **drags** on the base rather than turning freely, it must be raised. First remove the form by lifting it straight up off the base. Then loosen the Bearing Locknut and turn the Bearing Adjustment Screw *counter-clockwise*. Check adjustment by replacing form and rotate. Repeat adjustment if needed.

If Revolving Form is **too high** above base, steam will escape from between the base and the bottom of the form. To correct, first remove form from the base. Then loosen the Bearing Locknut and turn the Bearing Adjustment Screw *clockwise*. Replace form on the base and check adjustment. Repeat if needed.

MAINTENANCE RECOMMENDATION

Change the air filter located on the rear of the machine at least every six months depending on the use and environmental conditions. See the parts section of this manual for the replacement part number.

INSTRUCTIONS FOR REMOVING & REPLACING BAG

- (1) Remove yellow weights, 1 each side.



- (4) Replace yellow weights, one each side, on end of control strings

- (2) Raise the lower control ring (inside bag).



- (3) Lower the control ring inside bag.

- (3) Open zipper and untie bottom string



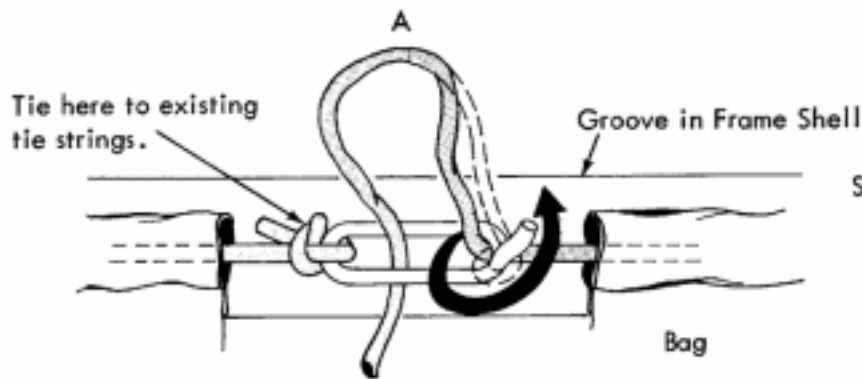
- (2) Tie bottom string in groove and close zipper. Refer to instructions on next page for proper knot when tying string. Straighten bag until control strings are at the sides

- (4) Lift bag off of revolving assembly shoulder form.



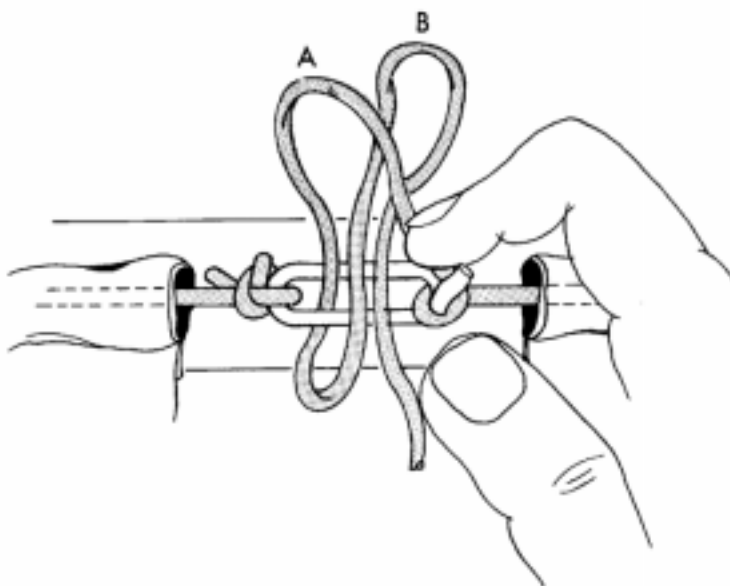
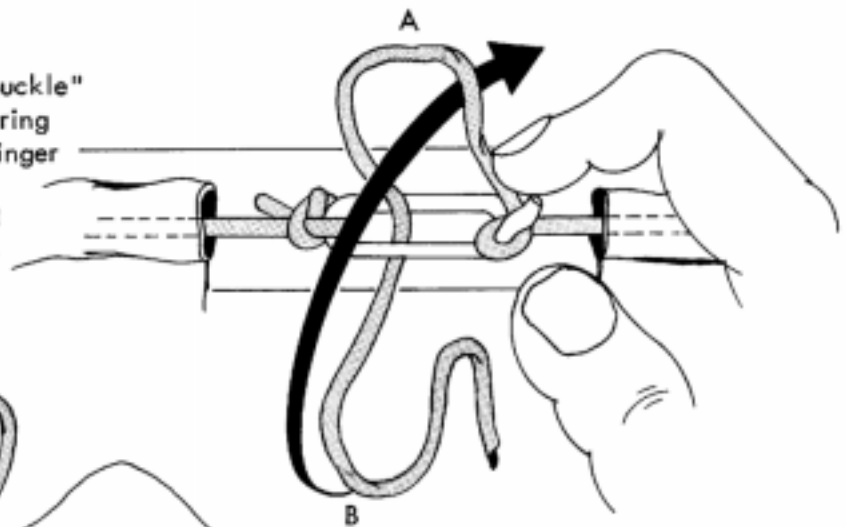
- (1) Place bag over revolving assembly shoulder form, with front of bag toward front of form.

INSTRUCTIONS FOR TYING LOWER TIE STRING



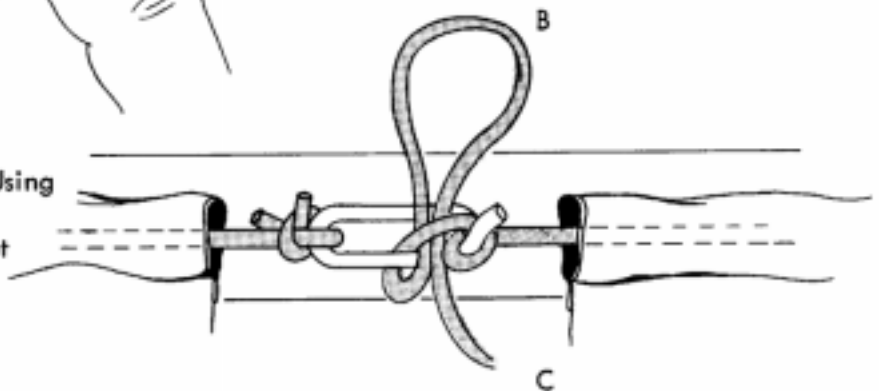
STEP 1 Work tie string into the groove, loop through the "buckle" as shown and pull string tight into groove.

STEP 2 Loop tie string around "buckle" horn and grip horn and string between thumb and forefinger as shown above. This will prevent slipping and steady the buckle for the next operation.



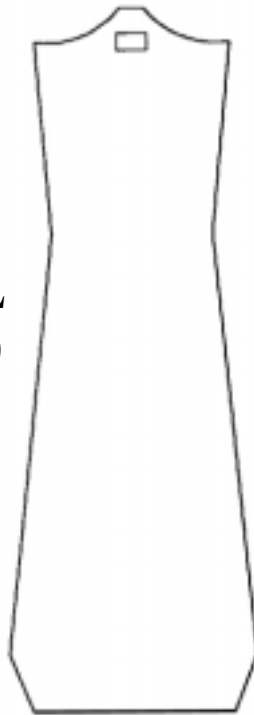
STEP 3 Loop additional tie string B through existing loop A, still holding the buckle.

STEP 4 Pull on loop B and tighten the knot on the buckle. Using loop B and string C tie an overhand knot to keep knot from slipping.

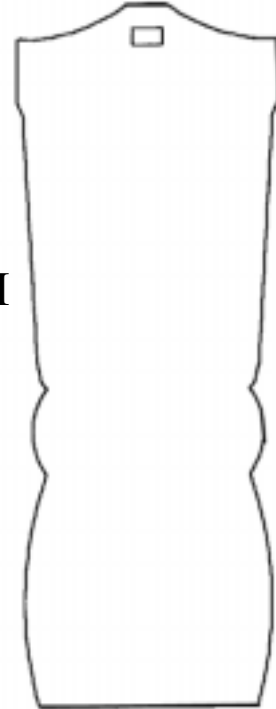


REPLACEMENT FORM BAGS

MS. CISSELL
Part No. F1310



SENSI-FORM
Part No. F1311



MR. CISSELL
Part No. FD10



SUZIE II
Part No. F833



CISSELL STEAM-AIR FINISHER
INSTRUCTIONS FOR ADJUSTING HEIGHT
OF REVOLVING FORM

Should the revolving form “drag” on the base rather than turn freely, the form must be raised.

Conversely, if the revolving form rides too high above the base, permitting steam to escape from the space between the form and base, the form must be lowered.

WHEN ADJUSTMENT MUST BE MADE, REMOVE REVOLVING FORM BY SIMPLY LIFTING IT STRAIGHT UP OFF THE BASE.

PROBLEM: Revolving form “drags” on base.

TO CORRECT: Loosen F286 Bearing Lock Nut. Turn F287 Bearing Adjustment Screw COUNTERCLOCKWISE

CHECK ADJUSTMENT: Replace revolving form on base. Rotate form. If perfectly adjusted, form will rotate freely and snugly on felt seal around top of base. If form is still too low... or too high...repeat adjustment until it is correct.

PROBLEM: Revolving Form rides too high above base.

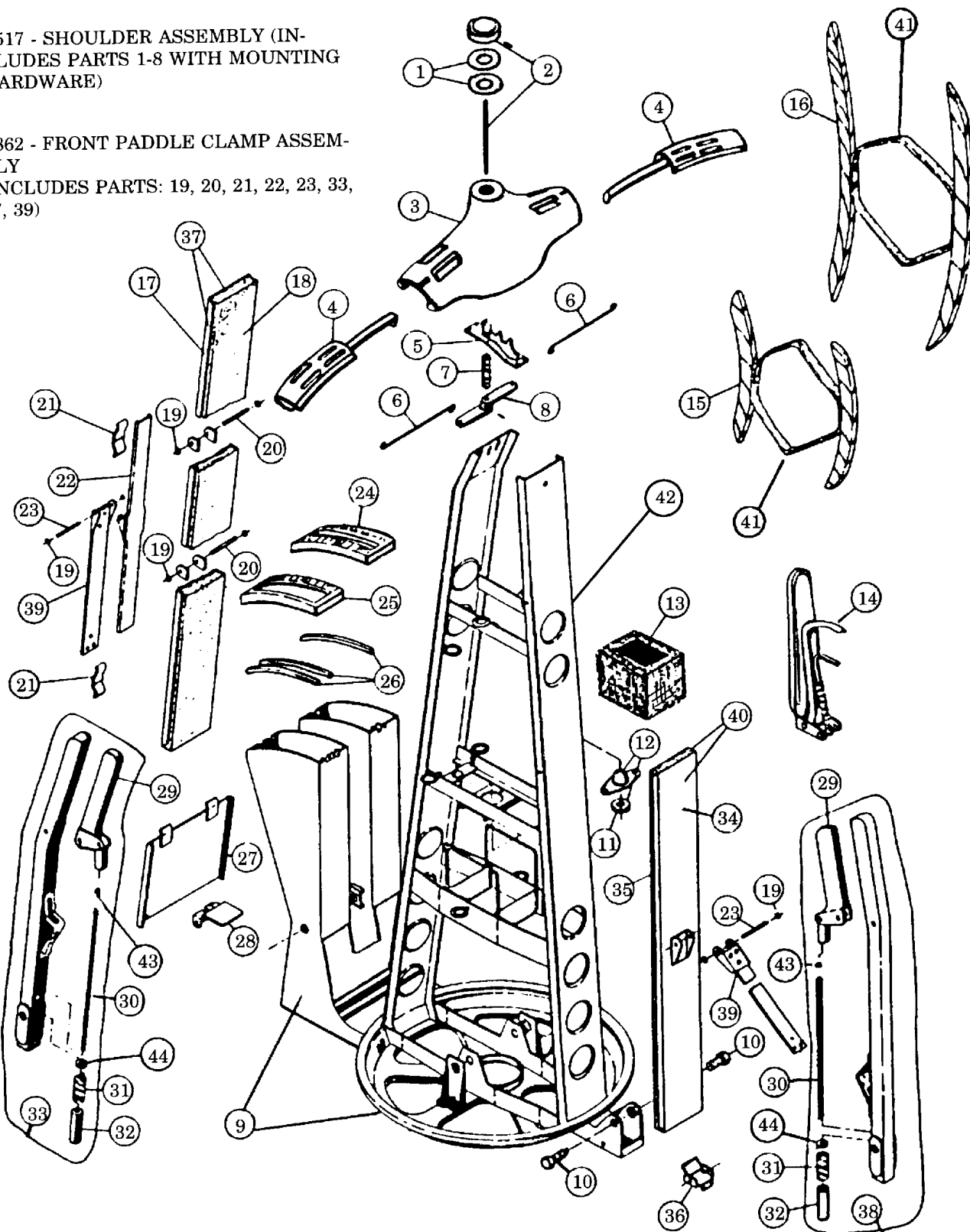
TO CORRECT: Loosen F286 Bearing Lock Nut. Turn F287 Bearing Adjustment Screw CLOCKWISE.

CHECK ADJUSTMENT: Replace revolving form on base. Rotate form. If perfectly adjusted, form will rotate freely and snugly on felt seal around top of base. If form is still too high... or too low... repeat adjustment until it is correct.

MR. CISSELL REVOLVING FORM ASSEMBLY

F517 - SHOULDER ASSEMBLY (INCLUDES PARTS 1-8 WITH MOUNTING HARDWARE)

F862 - FRONT PADDLE CLAMP ASSEMBLY (INCLUDES PARTS: 19, 20, 21, 22, 23, 33, 37, 39)



F861 - REAR PADDLE CLAMP ASSEMBLY (INCLUDES PARTS: 19, 23, 38, 39, 40)

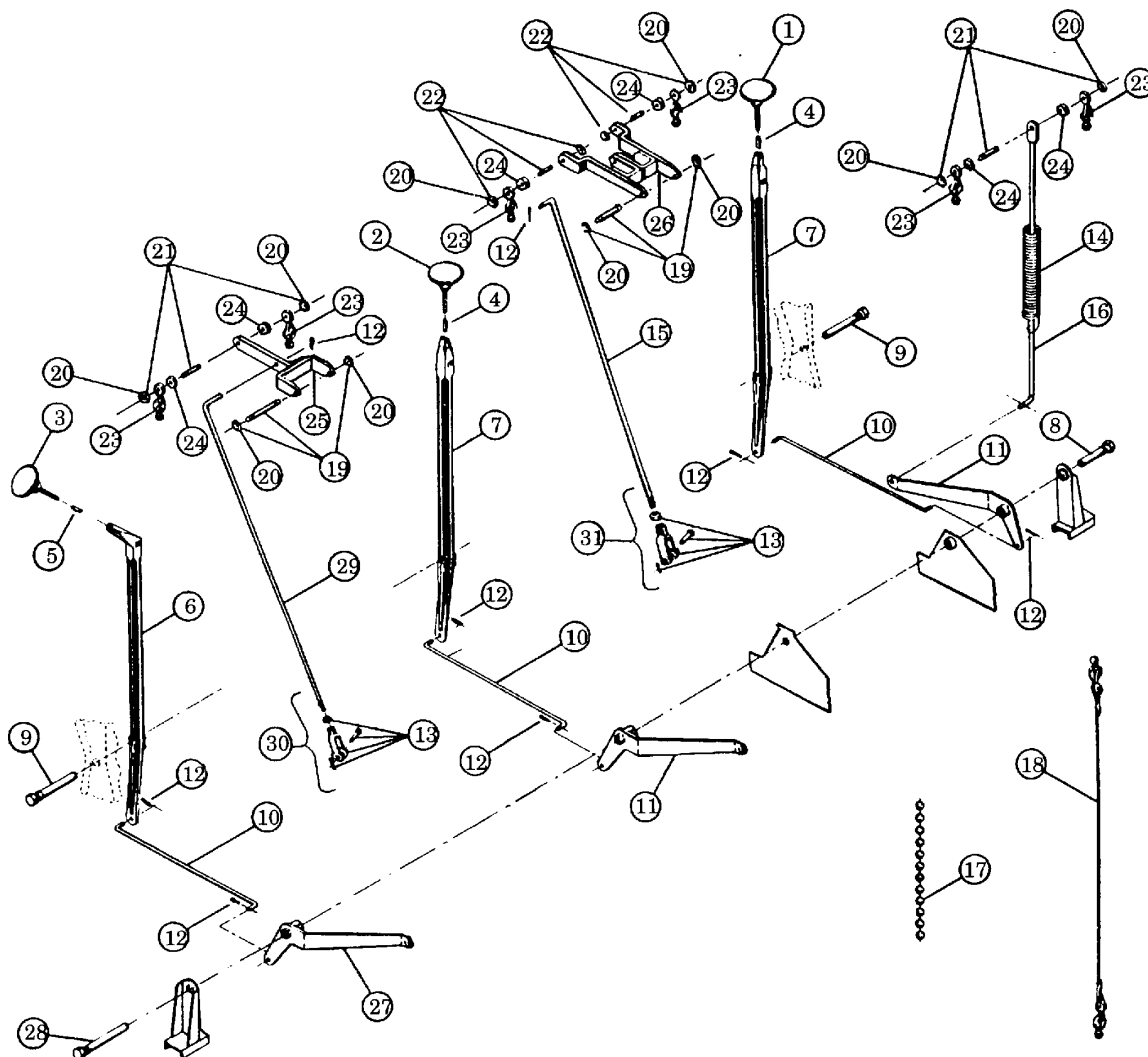
MR. CISSELL REVOLVING FORM ASSEMBLY - F22

NOTE: See next page for Waist, Hip, and Lower Controls.

Ref. No.	Part No.	Description
1	F192	Insulating Gasket
2	F381	Knob, Pin, & Adjusting Rod
3	F492	Shoulder Form
4	F493	Shoulder Extension
5	F494	Bearing Plate
6	F336	Shoulder Link
7	F197	Shoulder Tension Spring
8	F317	Shoulder Lever
9	F533	Control Box & Pan Assembly
10	F140	Clamp Bearing Bolt
11	F279	Thrust Bearing
12	F289	Cup & Bearing Assembly with Hardware
13	F9	Cloth Steam Spreader
14	F842	Vent Clamp*
15	F11	No. 11 Wooden Sleever*
16	F24	No. 24 Wooden Sleever*
17	F432	Front Paddle only
18	F433	Sponge only
19	F888	"E" Ring (3/16")
20	F240	Clamp Slide Support Pin
21	F243	Slide Spring Clip
22	F237	Clamp Slide
23	F267	Pivot Pin
24	F304	Waist Index Plate
25	F303	Hip & Lower Index Plate
26	F302	Control Slides
27	F332	Front Plate
28	F333	Front Latch
29	F104	Trigger Release
30	F335	Clamp Latch Rod
31	F151	Compression Latch Spring
32	F137	Latch Plunger
33	F334	Front Handle Assembly
34	F434	Rear Paddle only
35	F435	Sponge only
36	F427	Back Latch
37	F436	Front Paddle & Sponge Assembly
38	F437	Rear Handle Assembly
39	F218	Clamp Leaf Spring
40	F438	Rear paddle & Sponge Assembly
41	F63	Covered Spring Assembly
42	F534	Revolving Form Frame
43	F122	Locknut (1/4" - 28)
44	P104	Washer

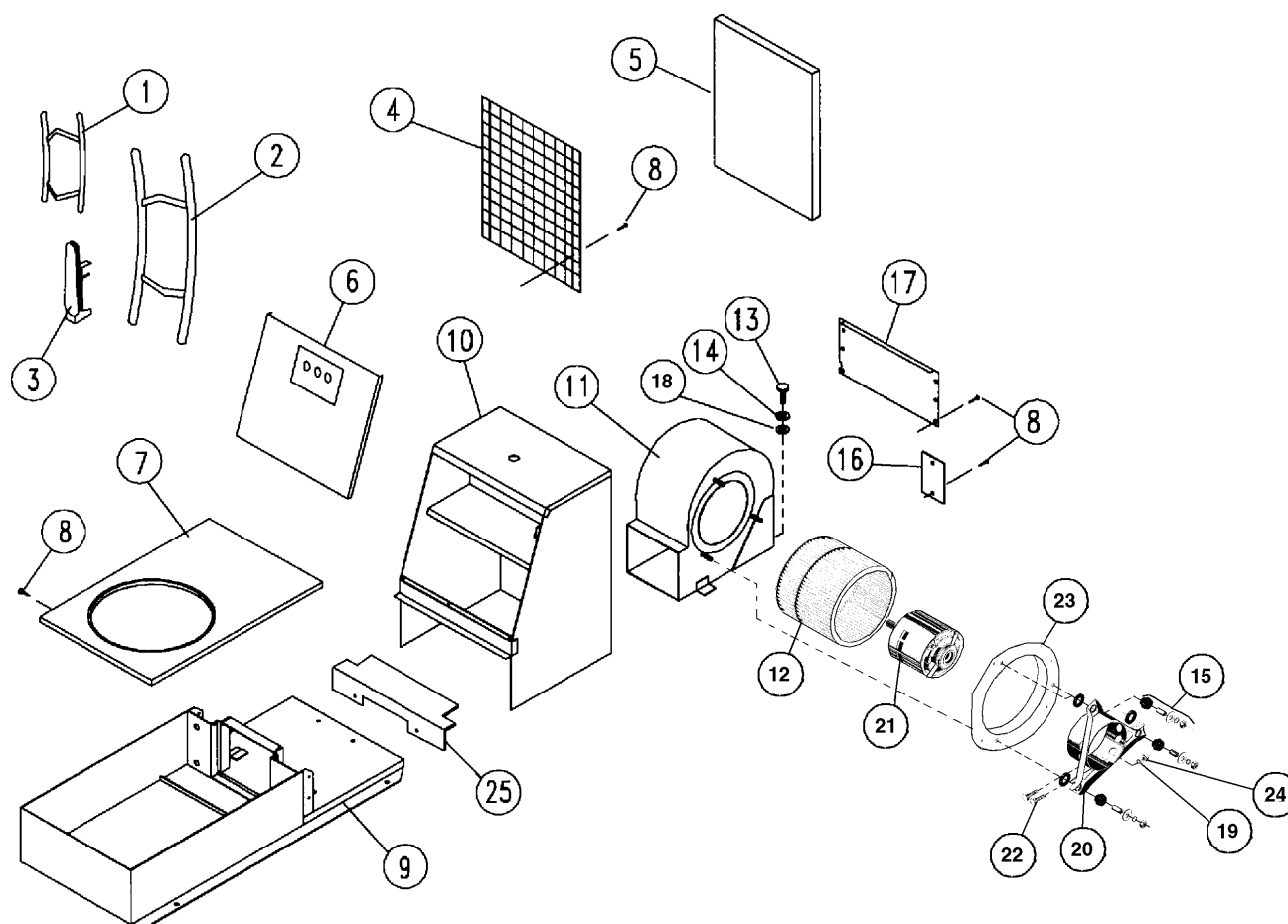
*Not part of F22 Assembly

WAIST, HIP, AND LOWER CONTROLS



Ref. No.	Part No.	Description	Ref. No.	Part No.	Description
1	F322	Waist Control Knob	17	040113282	Bead Chain (order by length)
2	F323	Hip Control Knob	18	F442	Cord, Beads, & Couplings Set
3	F321	Lower Control Knob	19	F443	2 Pins & 4 "E" Rings
4	F301	Spacer	20	F888	"E" Ring
5	F300	Spacer	21	F444	2 Pins & 4 "E" Rings
6	F319	Actuating Lever	22	F445	2 Pins & 4 "E" Rings
7	F318	Actuating Lever	23	F446	Swivel & Chain Coupling
8	F377	Bearing Pin	24	F447	Spacer
9	F324	Bearing Pin	25	F448	Lower Swivel Arm
10	F325	Connecting Link	26	F449	Hip Swivel Arm
11	F490	Draw String Lever	27	F450	Lever
12	V2	Cotter Pin	28	F331	Bearing Pin
13	P39	Yoke, Pin & Cotter Pin	29	F451	Lower Lever Rod
14	F429	Tension Spring	30	F1003	Lower Lever Rod Assembly
15	F439	Hip Lever Rod	31	F1004	Hip Lever Rod Assembly
16	F440	Waist Lever Rod			

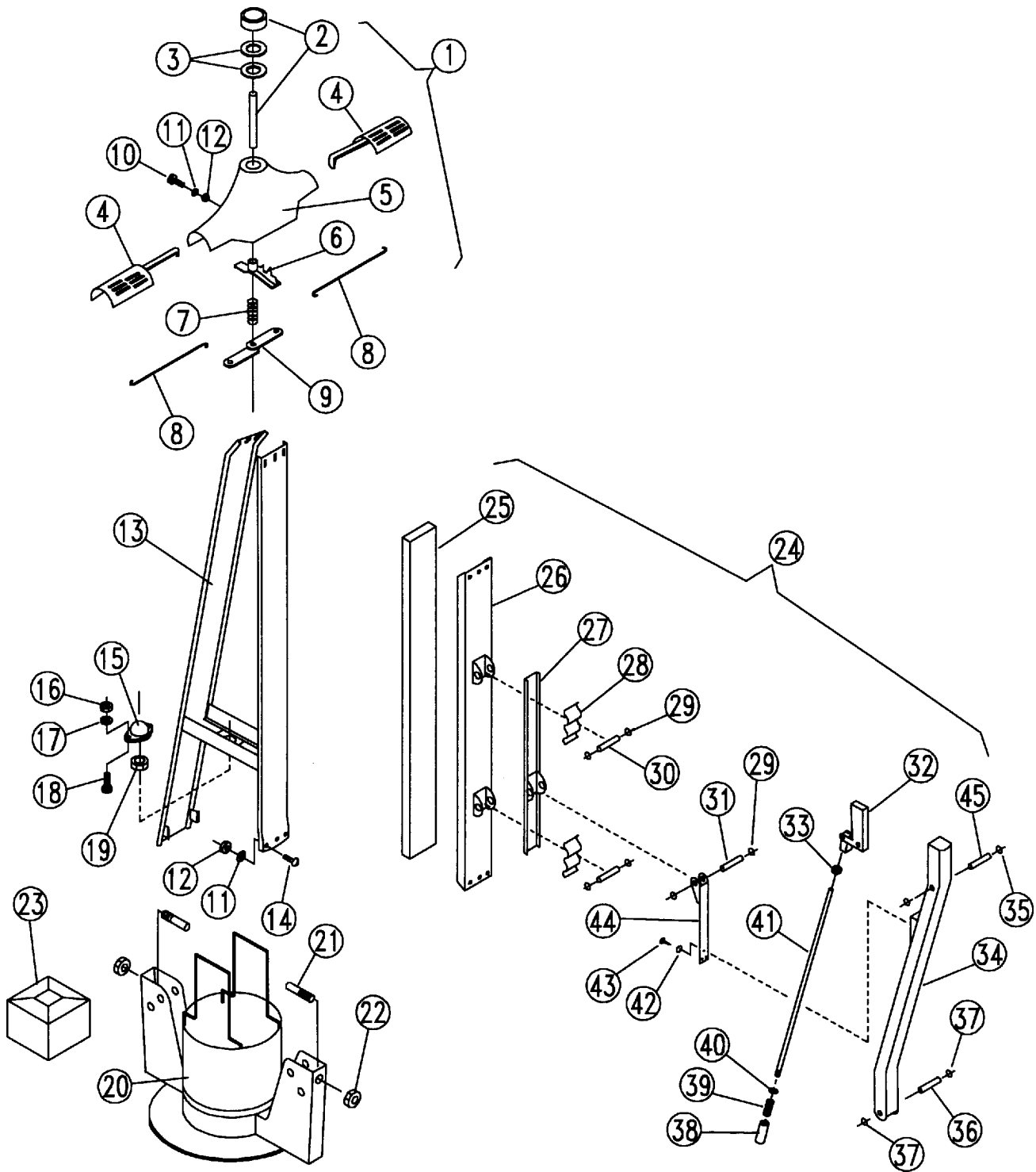
BASE ASSEMBLY PARTS



Ref. No.	Part No.	Description
1	F11	Sleeve (11")
2	F24	Sleeve (24")
3	F842	Vent Clamp
4	F1319	Screen Retainer
5	F1427	Filter
6	---	Control Panel (see separate page)
7	F1238	Base Top
8	TU7733	#8 x 1/2" Screw
9	F1203	Base Bottom
10	F1290	Rear Jacket
11	F1264	Fan Housing
12	FG292	Blower Wheel
13	RC344	1/4 - 20 x 3/4" Screw

Ref. No.	Part No.	Description
13	RC344	1/4 - 20 x 3/4" Screw
14	TU2846	1/4" Lockwasher
15	AF130	Motor Mounting Hardware
16	SB180	Junction Box Cover
17	F1265	Lower Rear Cover
18	TU2947	1/4" Flat Washer
19	TU2814	5/16" Lockwasher
20	AF131	Motor Mounting Bracket
21	MTR297	Motor, 115-230/50-60/1
22	C363	5/16" x 1-1/4" Bolt
23	FG226	Inlet Cone
24	C249	5/16" Hex Nut
25	F1463	Angle Seal

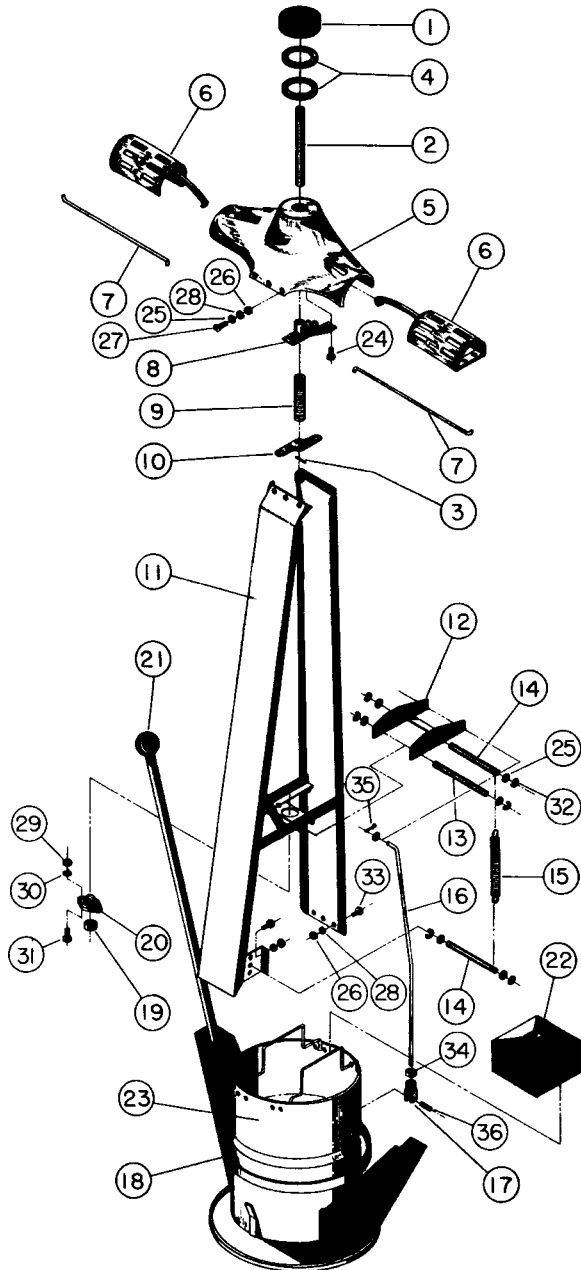
MS. CISSELL, SENSI-FORM REVOLVING FORM ASSEMBLY



MS. CISSELL, SENSI-FORM REVOLVING FORM ASSEMBLY

Ref. No.	Part No.	Description
1	F517	Adjustable Shoulder Form - consists of Parts 2-9.
2	F381	Knob & Rod Assembly
3	F192	Insulating Gasket
4	F493	Shoulder Extension
5	F492	Shoulder
6	F494	Bearing Plate
7	F197	Tension Spring
8	F336	Shoulder Link
9	F317	Shoulder Lever
10	TU3477	#10 - 24 x 1/2" Screw
11	FB187	#10 Lockwasher
12	FB185	#10 - 24 Hex Nut
13	F1242	Revolving Form
14	TU3480	#10 - 24 x 5/8" Screw
15	F431	Bearing Cup
16	PT355	1/4" Hex Nut
17	F860	Washer
18	F859	1/4" - 20 x 1/2" Screw
19	F279	Thrust Bearing
20	F1309	Shell Assembly
21	FG277	Stud
22	TU4787	3/8" - 16 x 9/16" Jam Nut
23	AF207	Cloth Cover
24	AF176	Front Paddle Clamp Assembly
25	F433	Sponge
26	F432	Front Paddle Channel
27	F237	Clamp Slide
28	F243	Slide Spring Clip
29	F888	Retaining Ring
30	F240	Pin
31	F267	Pivot Pin
32	AF157	Trigger Release Assembly
33	F122	1/4" - 28 Hex Nut
34	FG135	Handle
35	F359	Retaining Ring
36	FG288	Pin
37	F489	Retaining Ring
38	FG450	Latch Pin
39	F197	Spring
40	F950	Washer
41	FG443	Latch Rod
42	FB187	Lockwasher
43	F901	#10 - 24 x 3/8" Screw
44	F1188	Leaf Clamp Spring & Pivot
45	F949	Pivot Pin

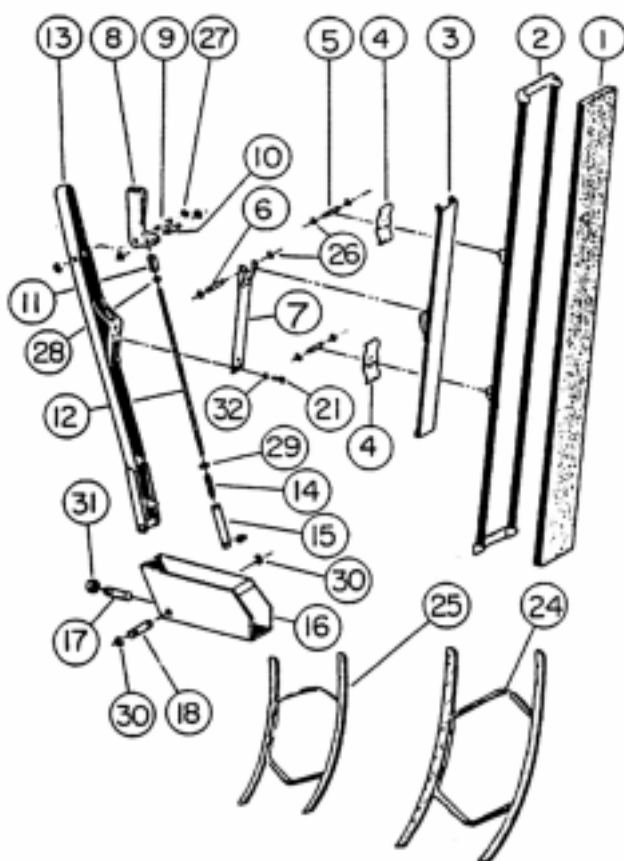
SUZIE II REVOLVING FORM FG236



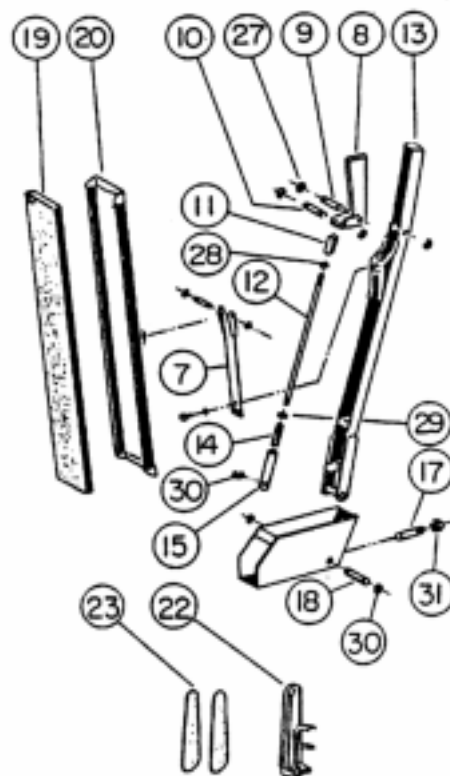
ITEM#	PART#	DESCRIPTION
F517 Adjustable Shoulder Assembly		
1-2	F381	Knob, Shoulder Adjustable Rod & Pin Rod & Pin
3	F49	Shoulder Lever Pin*
4	F192	Pyroid Gasket
5	F492H	Shoulder
6	F493	Sliding Shoulder
7	F336	Shoulder Connecting Link
8	F494H	Bearing Plate
9	F197	Shoulder Tension Spring
10	F317	Shoulder Lever
FG290 Revolving Form Frame Assembly		
11	FG219	Frame Assembly
12	FG220	Pivot Plate Assembly
13	FG222	3-5/8" x 1/4" Pin
14	FG223	4-1/2" x 1/4" Pin
15	TU2089	Spring
16	FG201	Support Rod
17	FG444	Yoke
18	FG202	Weight Ring
19	F289	Bearing Assembly
FG291 Revolving Form Shell Assembly		
21	FG156	Turning Arm Knob
22	AF207	Cloth Steam Spreader
23	FG264	Shell Assembly
24	TU3478	#8-32 x 1/2" Pan Head Screw*
25	P104	1/4" Brass Cut Washer*
26	FB185	#10-24 Hex Nut*
27	TU3477	#10-24 x 1/2" Flat Head Screw*
28	M271	3/16" Split Lockwasher*
29	PT355	1/4"-20 S.S. Hex Head Nut
30	F860	1/4" S.S. Split Lockwasher
31	F859	1/4"-20 x 1/2" S.S. Screw*
32	F359	Retaining Rings*
33	TU3480	#10-24 Round Head Screw*
34	F122	1/4"-28 Brass Nut*
35	FB201	Cotter Pin*
36	FG284	1/4" x 5/8" Roll Pin*
Not Illustrated		
	F833	Nylon Bag
	F816	Net Overbag
	FG310	Bag Weights 50 CY. 2" x 1-1/8"
	FG311	Bag weights 60 CY. 2" x 1-1/2"

(*Shipped as a package of 6)

FG137 Front Paddle Ass'y 36"



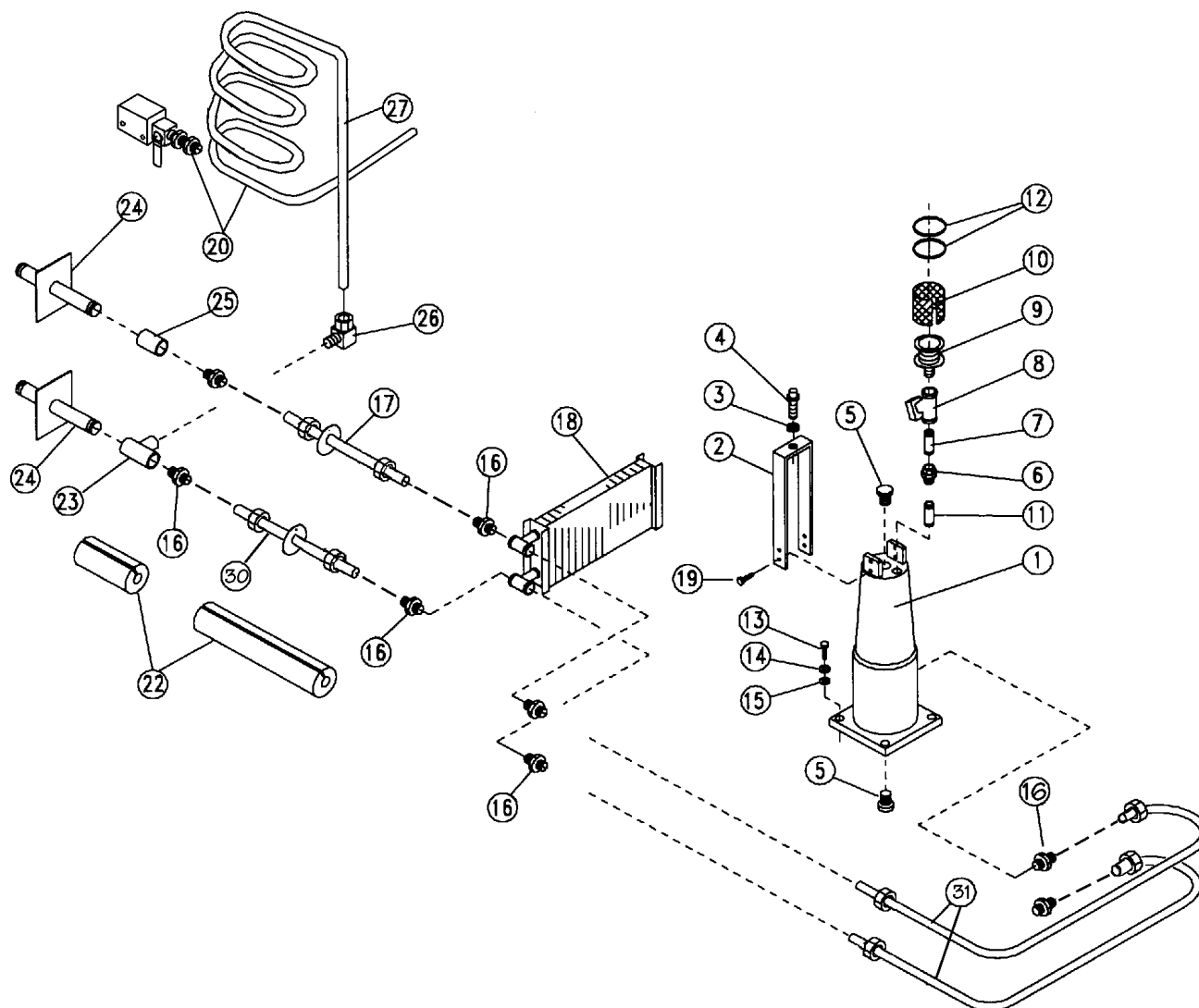
FG164 Rear Paddle Ass'y 24"



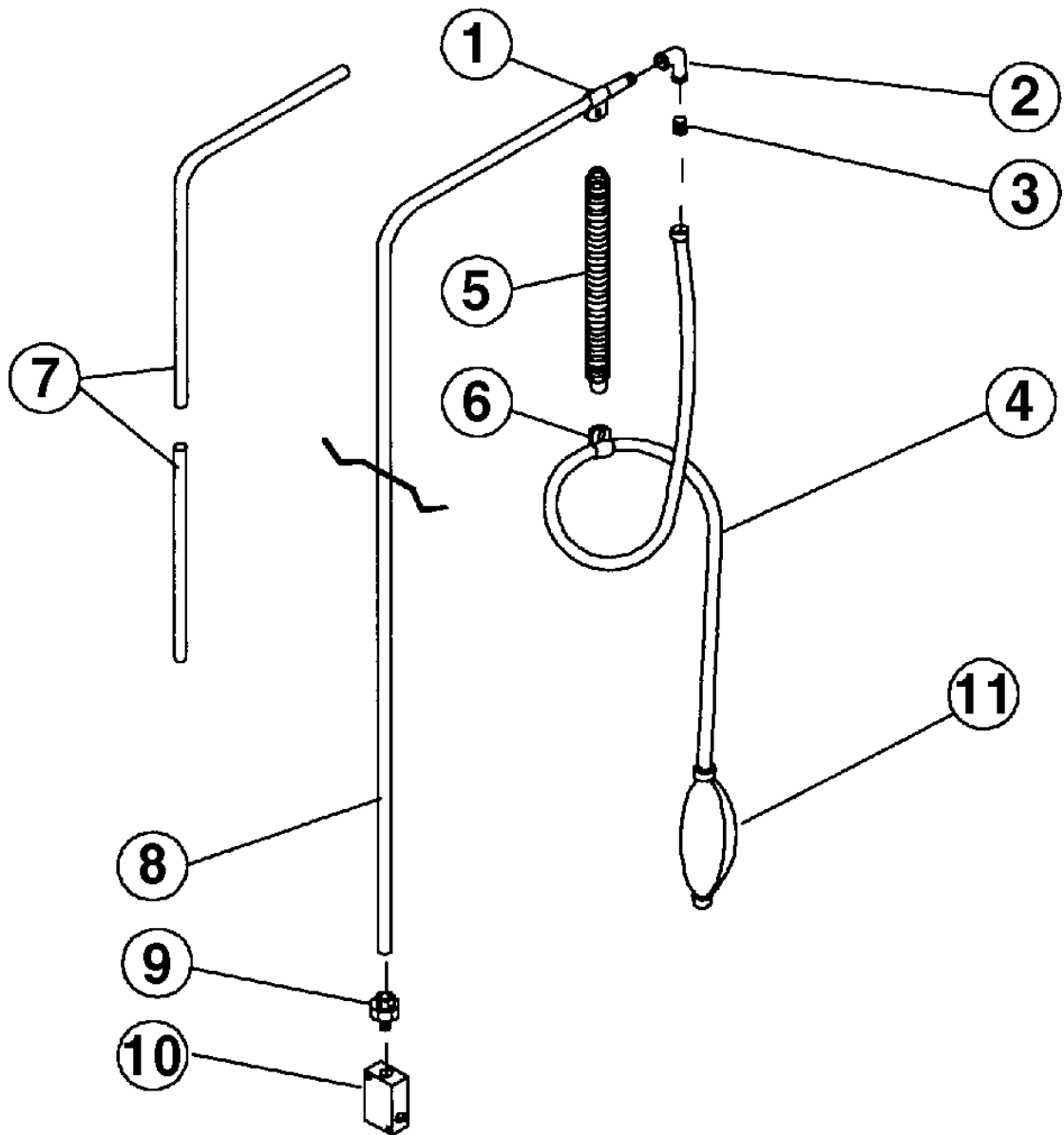
Ref. No.	Part No.	Description
	FG137WH	Front Paddle Ass'y 36"
	FG164WH	Rear Paddle ass'y 24"
1	F433	Sponge (36")
2	F432	Paddle Channel (36")
3	F237	Clamp Slide
4	F243	Slide, Spring (2 Req'd)
5	F240	Slide Pin, (2 Req'd.) (1/8")
6	F267	Pivot Pin (1/8")
7	F218	Clamp Leaf Spring
8	F104	Handle Trigger
9	F949	Handle Pin (3/16")
10	F1121	Rod Hinge Pin (3/16")
11	F136	Rod Hinge
12	FG443	Latch Rod
13	FG135	Handle Welded Ass'y
14	F197	Spring
15	FG450	Latch Pin
16	FG287	Clamp Base

Ref. No.	Part No.	Description
17	FG277	Stud
18	FG288	Pin (3/8")
19	F435	Sponge (24")
20	F434	Paddle Channel (24")
21	F901	#10 - 24 x 3/8" Hex. Hd. Screw*
22	F842	Vent Clamp
23	F904	Sandpaper & Sponge Set for F842
24	F24	#24 Sleever
25	F11	#11 Sleever
26	ET183	"E" Ring for 1/8" Pin*
27	F888	"E" Ring for 3/16" Pin*
28	F122	1/4" - 28 Brass Nut
29	F950	3/8" Cut Washer*
30	F489	"E" Ring for 3/8" Rod*
31	TU4787	3/8" - 16 Hex Nut*
32	FB187	#10 Split Lockwasher*

STEAM COLUMN & PIPING PARTS

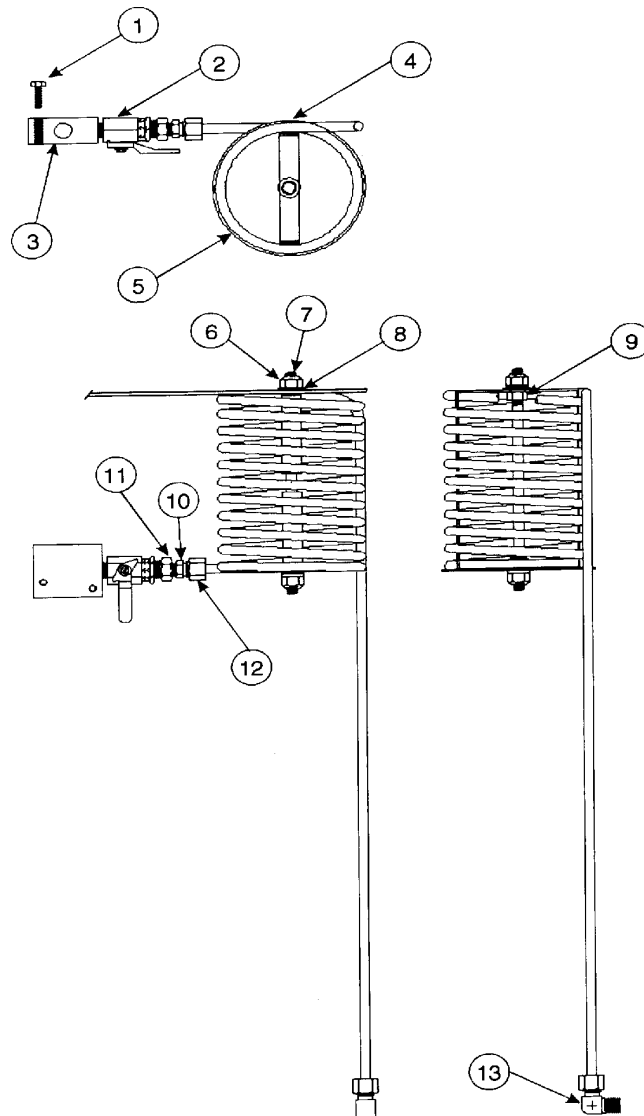


Ref. No.	Part No.	Description	Ref. No.	Part No.	Description
1	F1227	Steam Chamber Column	17	F1456	Coil Supply Tube Ass'y (CF100)
2	F1269	Bearing Support Frame		F1458	Coil Supply Tube Ass'y (CF600)
3	F286	Bearing Locknut	18	F1324	Steam Coil (CF100)
4	F287	Bearing Adjustment Screw		F1288	Steam Coil (CF600)
5	F542	Pipe Plug	19	F1399	1/4" - 20 x 1" Screw
6	F1292	Union	20		(see page 19)
7	390401016	3/8" x 2" Pipe Nipple	22	400518040	Insulation (order by length)
8	F1289	Solenoid Valve	23	FG143	Pipe Tee
9	F1296	Steam Nozzle	24	SC196	Pipe Weldment
10	F1394	Steam Spreader	25	SC505	Coupling
11	F1397	Pipe Nipple (3/8" x close)	26	F1461	Elbow w/Fitting
12	F894	Drawband	27	F1439	Condenser
13	IB139	3/8" - 16 x 1-1/4" Bolt	29	F896	Drawband Eye
14	VSB134	3/8" Lockwasher	30	F1457	Coil Return Tube Ass'y (CF100)
15	IB140	3/8" Flat Washer		F1459	Coil Return Tube Ass'y (CF600)
16	F1449	Connector Flare	31	F1448	Column Supply Tube Ass'y



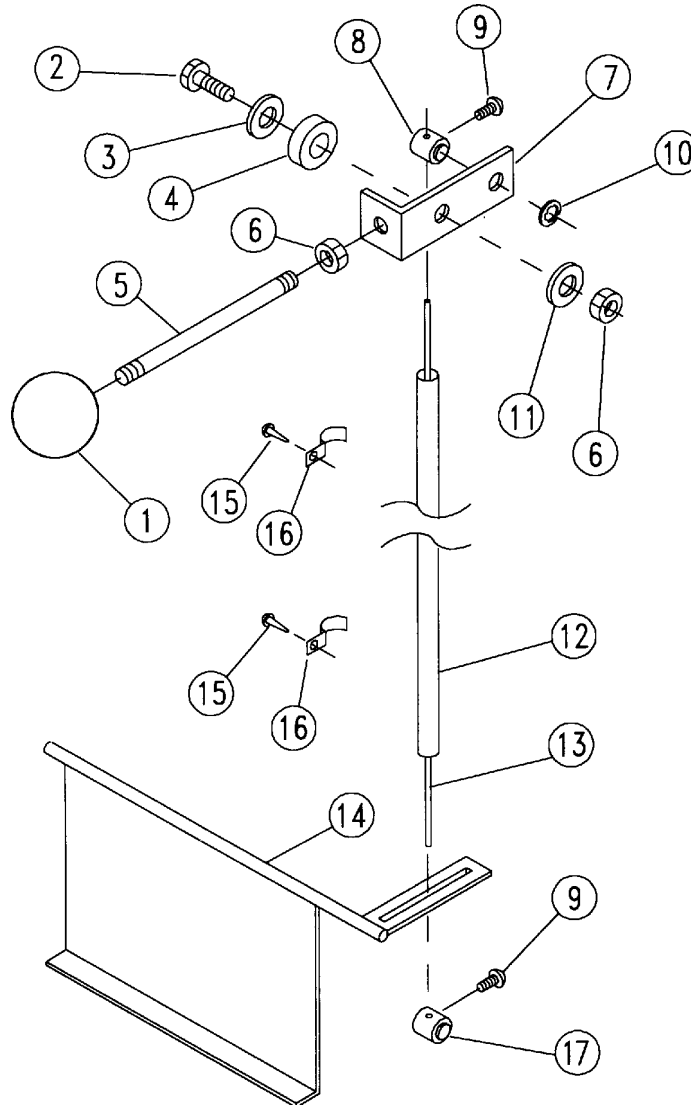
Ref. No.	Part No.	Description
1	J42	Hose Clamp
2	P530	Elbow - 1/4" x 1/8"
3	SGV35	Adapter
4	SF274	Spray Gun Hose
5	SG38	Spring
6	J3	Small Hose Clamp
7	136067752	Insulation (order by length)
8	F1273	Spray Gun Pipe
9	OP225	Straight Connector - 1/8" NPT x 1/4" Tube
10	F1441	(see page 19)
11	SG043	Spray Gun
	SK043	Repair Kit for Spray Gun consists of a plunger tube, strainer, nozzle, and 2 gaskets

F1447 - CONDENSER COIL ASSEMBLY



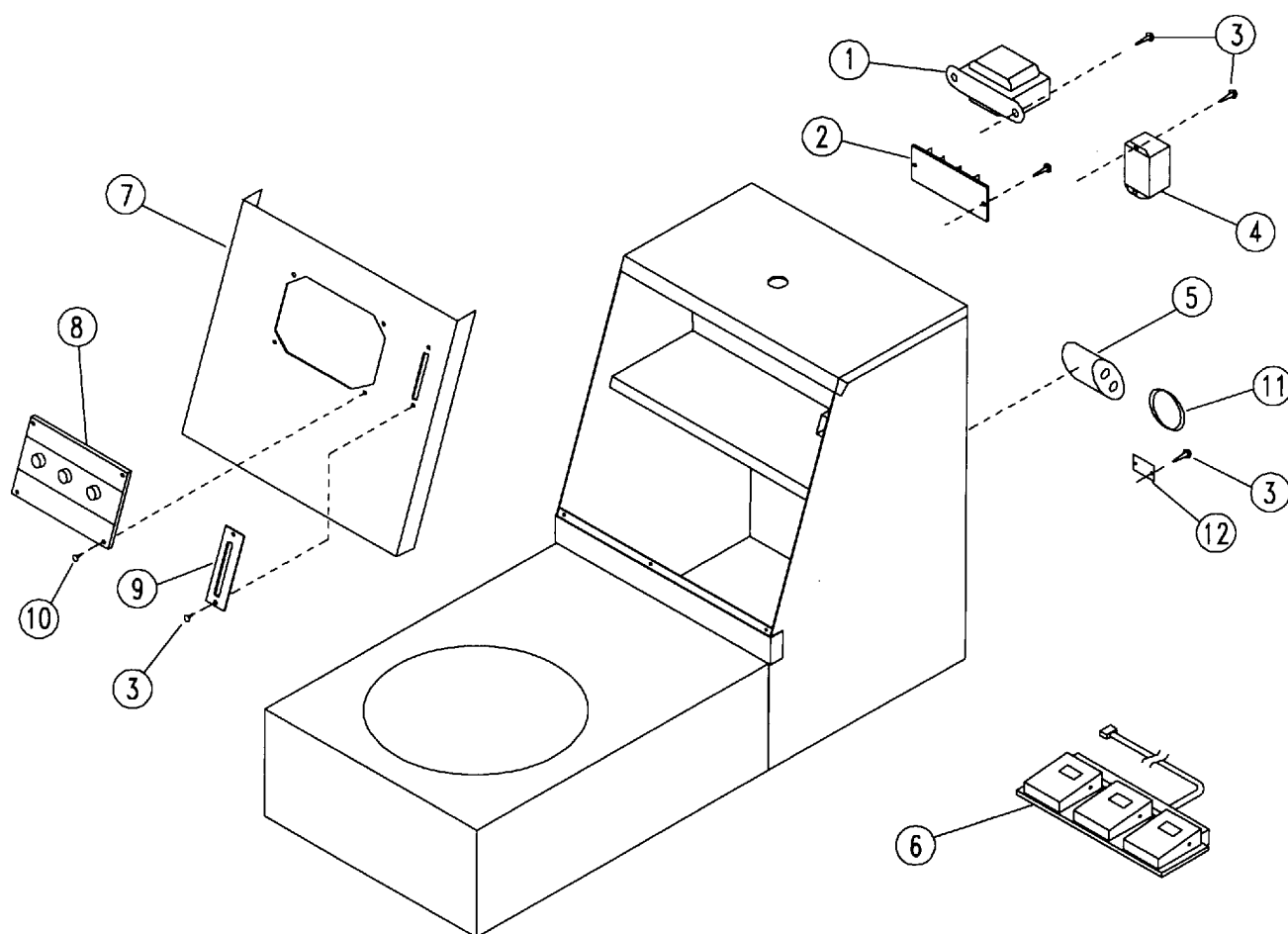
Ref. No.	Part No.	Description
1	F725	Screw 10 - 24 x 5/8" (2 req'd)
2	F1440	Valve - 1/4" Globe
3	F1441	Manifold - Spray Gun
4	F1439	Condenser Coil
5	F1445	Plate - Coil Support
6	RC382	Lock Nut - 1/4" - 20
7	F1446	Threaded Rod - 1/4" - 20
8	TU2847	Washer
9	PT355	Nut - 1/4" - 20
10	OP297	Compression Fitting
11	BR61	Bushing
12	SU65	Nut Compression w/PU8 Bead
13	F1461	Elbow

DAMPER ASSEMBLY PARTS



Ref. No.	Part No.	Description
1	D16	Control Knob
2	RC344	1/4" - 20 x 3/4" Screw
3	TU2847	1/4" Cut Washer
4	F660	Rubber Washer
5	F750	Shaft
6	TU4934	1/4" - 20 Nut
7	F1216	Damper Control Lever
8	F664	Swivel
9	SV332	#8 - 32 x 3/8" Screw
10	F358	Retaining Ring
11	F639	Washer
12	F1280	Damper Tube
13	F1283	Damper Wire
14	F1222	Damper Plate
15	TU7733	#8 x 1/2" Screw
16	F645	Tube Clamp
17	F1438	Wire Clamp

CONTROL PANEL & ELECTRICAL PARTS

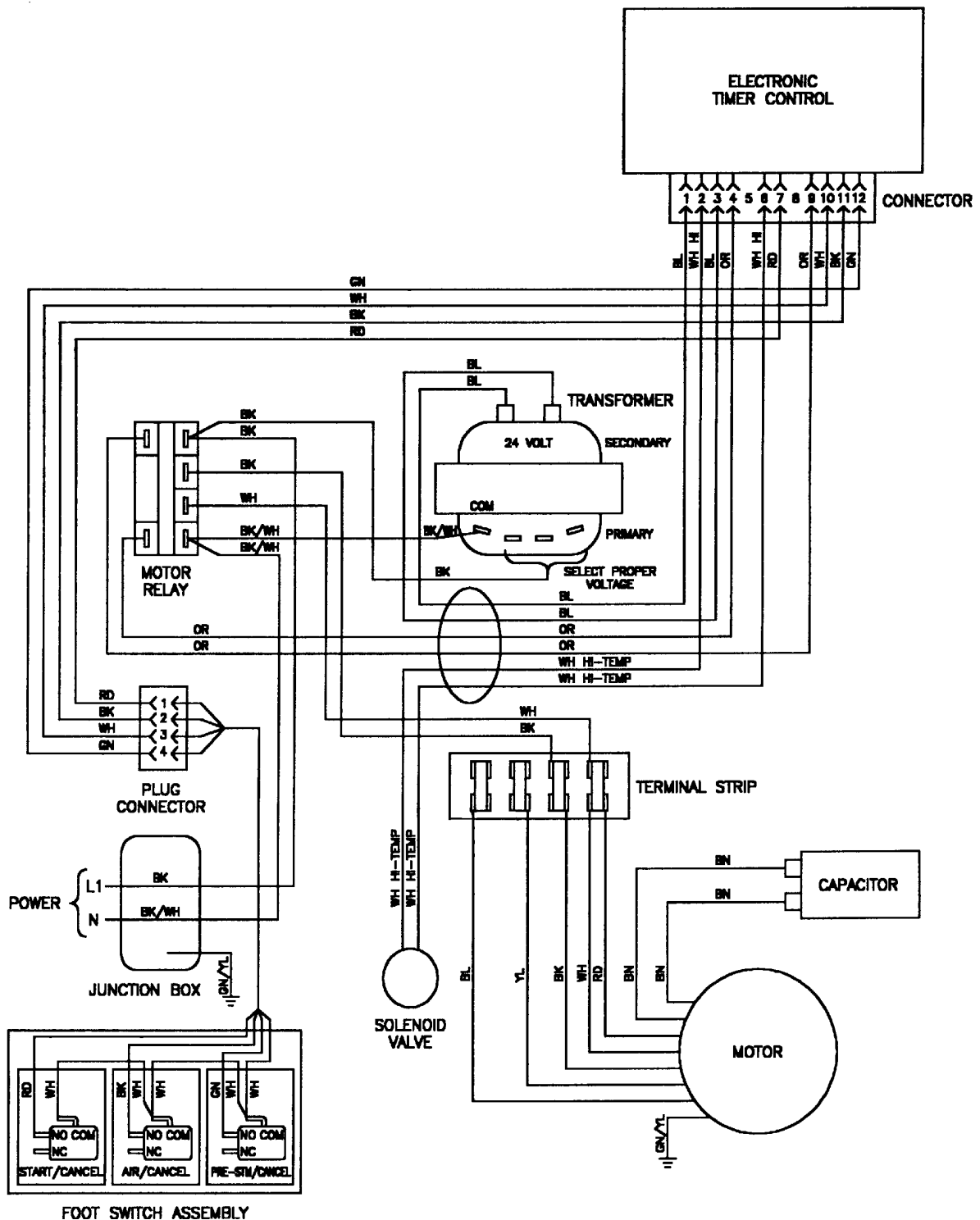


Ref. No.	Part No.	Description
1	F1301	Transformer (120/24V)
	F1305	Transformer (200-240/24V)
2	TU8629	Terminal Board
3	TU7733	#8 x 1/2" Screw
4	F1300	Relay
5	F1302	Capacitor (1 H.P. Motor)
6	F1243	Foot Switch Assembly
7	F1259	Control Panel
8	ET250	Electronic Timer
9	SF259	Damper Control Label
10	F1406	#8 Black Anodized Screw
11	F1325	Wire Tie
12	F1396	Wire Tie Mount
	F1304	Wire Harness (not shown)

WIRING DIAGRAM

FW 144

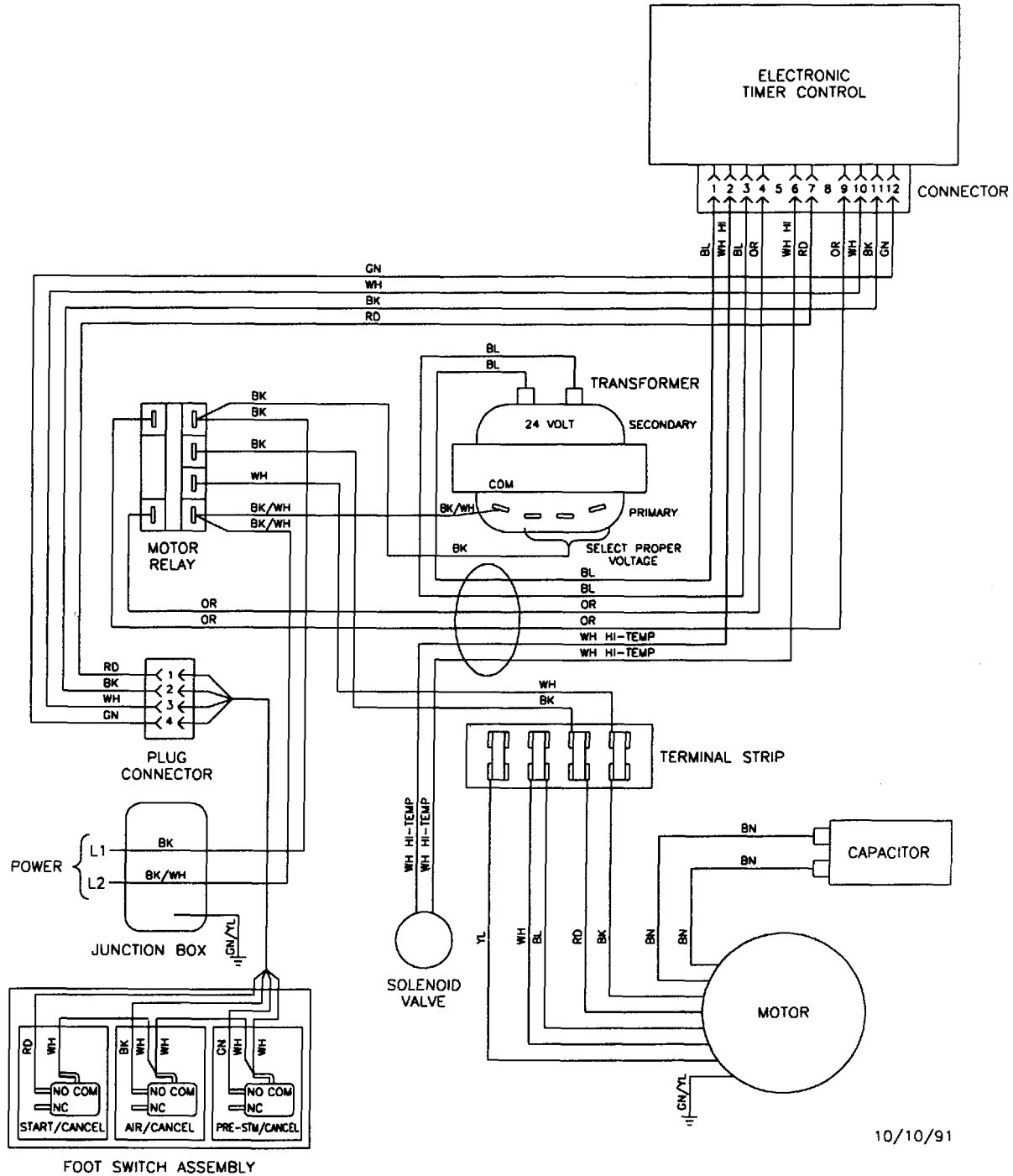
CONSOLIDATED FORM FINISHER
100-120 VOLTS, 50/60 HZ., 1 PHASE
WITH 24 VOLTS, 60 HZ., 1 PH. CONTROLS



WIRING DIAGRAM

FW145

CONSOLIDATED FORM FINISHER
200-240 VOLTS, 50/60 HZ., 1 PHASE
WITH 24 VOLTS, 60 HZ., 1 PH. CONTROLS



10/10/91

CONSOLIDATED FORM FINISHER

120/240 VOLTS, 50/60 HZ., 1 PH. MOTOR

WITH 24 VOLTS, 50/60 HZ., 1 PH. CONTROLS

